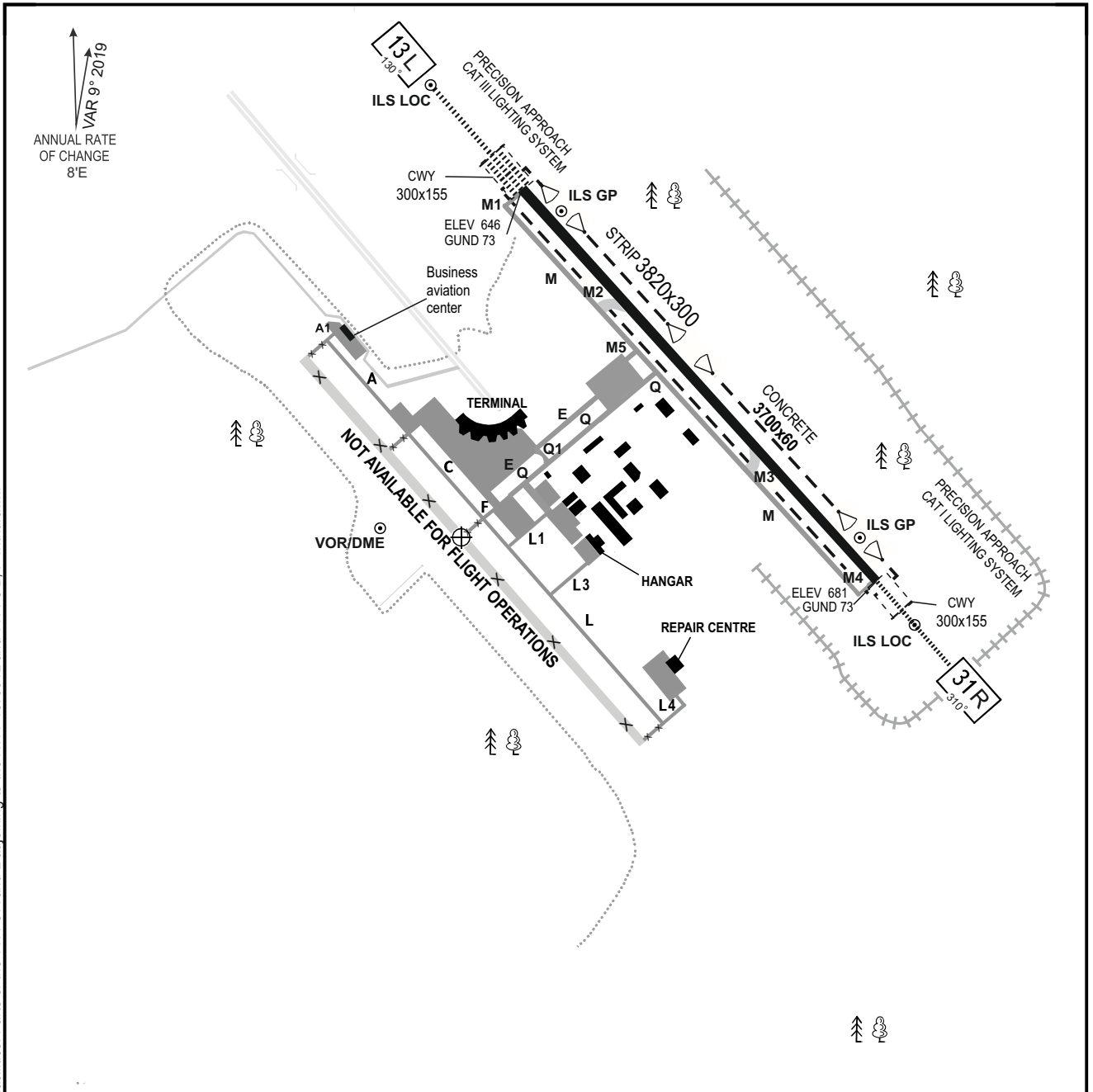


**AERODROME  
CHART - ICAO**

ARP  
N53°52'57"  
E028°01'51" ELEV 681

MINSK TOWER 130.400 PRI  
MINSK GROUND 118.300 SRY  
121.575 PRI  
129.950 PRI

**MINSK, BELARUS  
MINSK - 2**



CHANGE: RWY 13R/31L withdrawn. Modified communication facilities. Parts of the TWY's A and L adjoining to the RWY 13R/31L and TWY's B, P withdrawn.

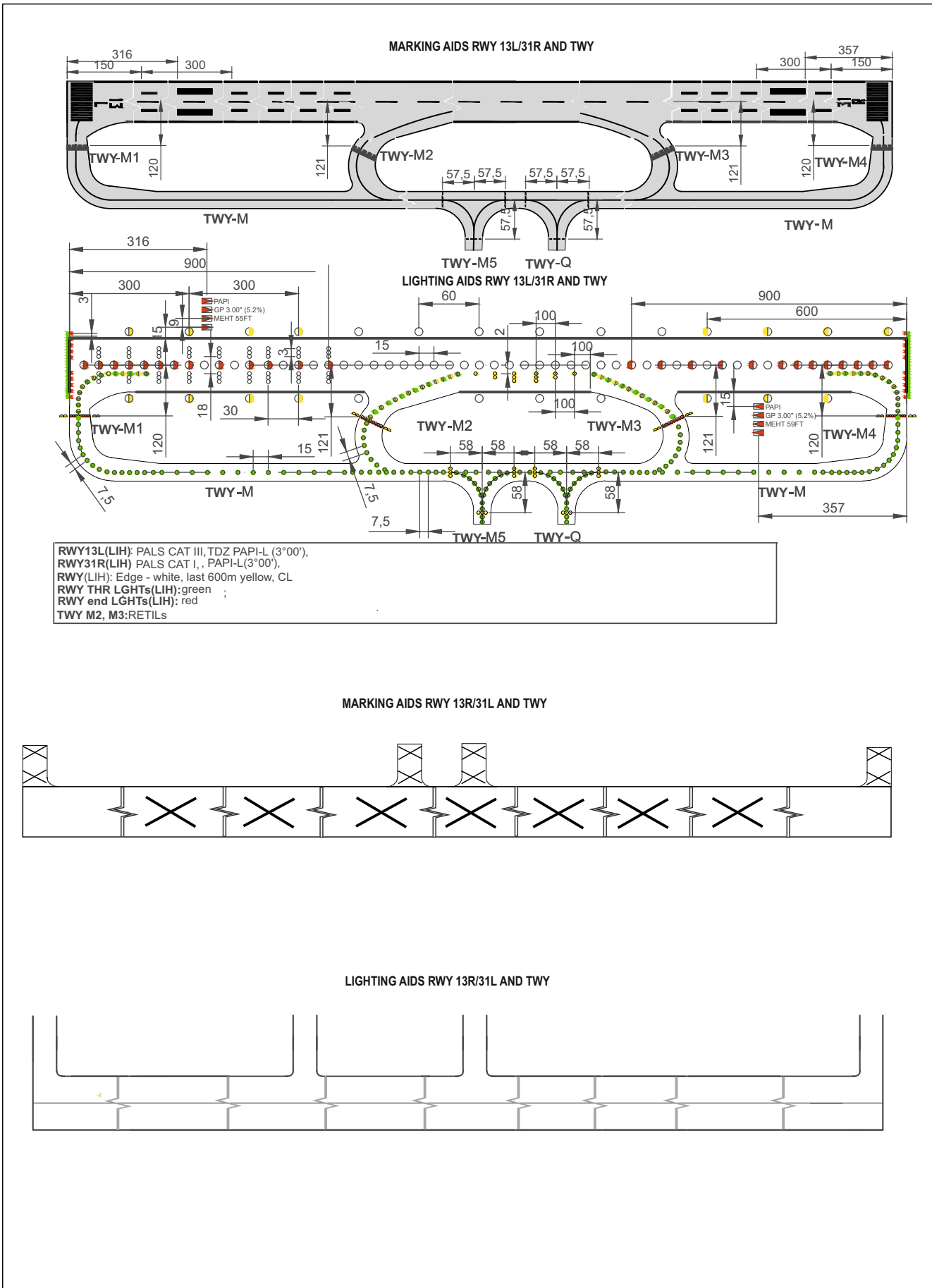
ELEVATIONS IN FEET  
DISTANCE IN METRES  
BEARING ARE MAGNETIC

|             | DIRECTION (TRUE) | THR COORDINATES                 | SURFACE  | STRENGTH       |
|-------------|------------------|---------------------------------|----------|----------------|
| RWY 13L/31R | 138°45'34"       | N53°54'19.03"<br>E028°01'59.75" | CONCRETE | PCN 85/R/B/W/T |
|             | 318°47'22"       | N53°52'49.02"<br>E028°04'13.27" |          |                |

MINSK, BELARUS

AERODROME  
CHART

MINSK - 2



**CHANGES:** RWY 13R/31L withdrawn. DLTD exit lighting aids from RWY 13R/31L and TWY's A, B, P, L 13R/31L. DLTD marking RWY 13R/31L. Parts of the TWY's A and L adjoining to the RWY 13R/31L and TWY's B, P withdrawn.